



DRS-DIGITRAX SERVICES

LitePrompter

User's Manual

Installation instructions

- 1) Place disk in Drive A:
- 2) From Windows Explorer, click on Drive A.
- 3) Double click Setup.exe on Drive A directory.
- 4) Follow the installation instructions on the screen.
- 5) Read the A:/version.txt file for more information.
- 6) Start up LitePrompter by clicking Icon in Program.
- 7) Click [Register] button to begin registration.

Before you begin

Before you begin using LitePrompter, we recommend the following optimal configurations:

- Change your screen area to 640 x 480 and colors to 256 colors. To change these settings, from the [Start] menu click [Settings][Control Panel][Display][Settings].
- Under the [Help] option on the LitePrompter main menu, use [Factory Defaults].

These display settings may be necessary in order to properly adjust the mouse control and speed delay options for your first LitePrompter session.

Thank you for using LitePrompter teleprompting software.

DRS-DigiTrax Software Team

A TRUE 32 BIT W95/NT4.0 Adjustable Teleprompter (not a dos box version) Runs well in a Pentium, 586 or better. Your existing (composite/Svideo) video card or scan converter will determine the output quality and how smooth the scrolling action is. This program was designed to help make your job as a video producer easier than ever before! Have you ever worked with a Client that forgot their lines? Have you ever wanted to pace the talents dialog with a fixed script? This is a tool with many easy-to-use features that will improve your video taping and video presentation operations. This manual contains information on using the following feature of LitePrompter.

- Use any window's font and color
- Unlimited number of lines @ 0-10 lines per second
- Full Screen Scroll
- Hi-Speed Reverse Scrolling
- Adjust font size and speed while scrolling
- Play from Cursor
- Multiple configurations
- Windows Style Script Editor (cut, paste, copy, etc.). Printing

This documentation and accompanying software are copyright © 1997 by DRS-DIGITRAX. All rights reserved. No part of this publication may be reproduced in any form or for any purpose without prior written authorization from DRS-DIGITRAX.

Microsoft and Windows are registered trademarks of Microsoft Cooperation.

All other trademarks are properties of their respective companies and are hereby acknowledged.

Use of this software is subject to the terms and conditions of DRS-DIGITRAX **End-User Software License Agreement and Disclaimer** contained in this documentation.

Preface

The junior version of TeleScreen-32, LitePrompter was written because of our frustrations with attempting to find a teleprompter software program that was professional, and yet, affordable. We simply were not able to find any W95/W98/NT4.0 teleprompting software to use for our own video productions. Since the inception of TeleScreen-32 and LitePrompter, we have been able to produce documentaries and other talking head segments with ease. LitePrompter and Telescreen-32 also has feature rich options that are able to be used for quick video titling through a high quality SVideo out, direct to tape.

DRS-DigiTrax is fortunate in that we have clientele ranging from television broadcast studios to grammar schools, both national and international. We have met a wide range of individuals through the Internet and our software. We look forward to helping you reach your video production goals as well.

Before you continue, enter below your registration name and key code. In the event of re-installation, or transfer to another computer, you will need to re-register your teleprompter software.

Registration Name – Exactly as provided in registration receipt (case sensitive):

Key Code:

Table of Contents

Page	Section
	I Installation & Before you begin
	II TelePromPTing Software for the Multimedia PC
	III Preface & Registration
1.....1.0	File Menu
1.....1.1	New
1.....1.2	Open
1.....1.3	Save Text File
1.....1.4	Save Text File As
1.....1.5	Save Default Configuration
1.....1.6	Load Configuration
1.....1.7	Save Configuration As
1.....1.8	Print
1.....1.9	Printer Setup
1.....1.10	Exit
2.....2.0	Edit Menu
2.....2.1	Undo
2.....2.2	Cut
2.....2.3	Copy
2.....2.4	Paste
2.....2.5	Find/Replace
3.....3.0	Configure Menu
3.....3.1	Video Mode (full screen)
3.....3.2	Sync W/Retrace
3.....3.3	Try 256 Colors?
3.....3.4	Previous Display
4.....4.0	Font Menu
4.....4.1	Type and Size (Fonts & Colors)
4.....4.2	Font Color
4.....4.3	Background Color
4.....4.4	Bold
4.....4.5	Underline
4.....4.6	Italic
4.....4.7	Left Justify
5.....4.8	Center Text
5.....4.9	Right Justify
5.....4.10	Start From Cursor
5.....4.11	Word Wrap
5.....4.12	No Returns

Table of Contents

Page	Section
6.....	5.0 Window Menu
6.....	5.1 Show Editor Only
6.....	5.2 Hide Button Bar
6.....	5.3 Show Button Bar
7.....	6.0 Help Menu
7.....	6.1 Help
7.....	6.2 About LitePrompter
7.....	6.3 Factory Defaults
7.....	6.4 DRS-DigiTrax Home Page
7.....	6.5 Save Status Doc
8.....	6.6 Send Email Support Request
8.....	6.7 Show Help Hints
9.....	7.0 Display Options
9.....	7.1 Font Size & Delay Option
9.....	7.2 Pixel Processing
9.....	7.3 Screen
	A. Outline Color
	B. Outline Width
10.....	7.4 Window Size
10.....	7.5 Play Options
	A. No Pause
	B. Stop @ End
	C. Ctr Marker On
	D. Use Anti Alias
11.....	8.0 Other Information
11.....	8.1 Quick Start
11.....	8.2 Speed Bar
11.....	8.3 Non-Video Mode
11.....	8.4 Reverse Scroll
11.....	8.5 Bi-Directional Editing
12.....	8.6 Hardware Requirements
12.....	8.7 Support
13.....	9.0 How To's
13.....	9.1 How to begin scrolling text
13.....	9.2 How to use Anti Alias
14.....	9.3 How to use Pixel Processing

Table of Contents

Page	Section
15.....	10.0 Problems
15.....	10.1 Jerky or watery movement
15.....	10.2 Blank screen after clicking play
15.....	10.3 Adjust speed/size - too slow
16.....	10.4 Scrolling motion is too slow
16.....	10.5 Checking your Video Mode
16.....	10.6 Still starts in demo mode
17.....	10.7 More Speed
17.....	10.8 Background Colors Are Wrong
17.....	10.9 Font Colors are wrong
18.....	Disclaimer of warranty

Section 1.0 File Menu

1.1 New

This option clears any text in the text editor. Be sure to save your text file before clearing.

1.2 Open

This option opens an existing text file.

1.3 Save Text File

This option assumes you have already opened an existing text file, have made changes, and now want to save it using its current file name.

1.4 Save Text File As

Will save the current text file with a different file name.

1.5 Save Default Configuration

Will save all current application settings as the new default configuration.

1.6 Load Configuration

Loads a different set of settings.

1.7 Save Configuration As

Will let you save the application's current configuration using a different name. This is a time saver if you have clients that require different settings.

1.8 Print

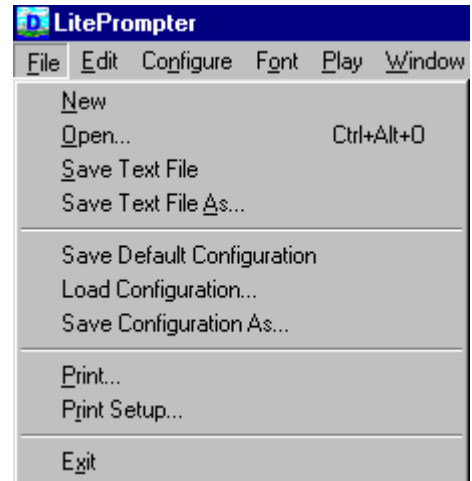
Will **print** the current text file, in the current scrolling font, to paper.

1.9 Print Setup

Use this option to change your printer settings.

1.10 Exit

Will close the program.



Section 2.0 Edit Menu

2.1 Undo

This option will **undo** the last **cut**, **copy**, or **paste** command that was performed.

2.2 Cut

Use **cut** to remove the selected text. This option will put the selected text in the window's clipboard, and save it there until you paste it into the current text document.

2.3 Copy

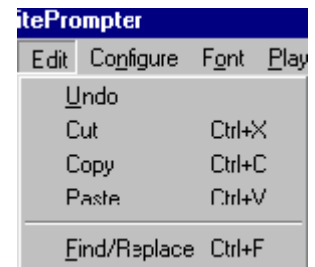
Use this option to **copy** text that you want to paste elsewhere in your project text file.

2.4 Paste

Use **paste** to place the text you copied in your text file.

2.5 Find/Replace

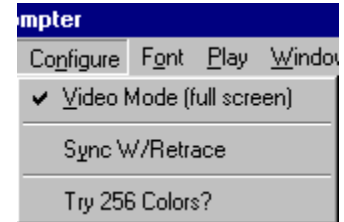
Use the **find** option to locate the selected text; it will **find** the text line that contains your search text. This is useful if you are using the **Start from Cursor** option. After the searched text has been found, this option will highlight the line in which it was found and move the cursor to this position in the text document. If in the **Start from Cursor** position mode, scrolling will begin at the found text's position. Clicking **Play** would then start scrolling from that line. Both the **Find** and **Replace** options are case sensitive..Use the **Replace** option to replace a word or phrase throughout your text file. Both the **Find** and **Replace** options are case sensitive.



Section 3.0 Configure Menu

3.1 Video Mode Full Screen

This option defaults to **video mode** and full use of the entire monitor for scrolling text.



3.2 Sync W/Retrace

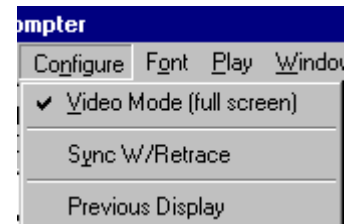
The **Sync W/Retrace** can be used if you are running W95/98. This option will force windows to wait until the video hardware has finished painting a scrolled line before painting another one. This will slow down the scrolling process but will provide a much smoother scroll.

3.3 Try 256 Colors?

If you have your display set up as Hi-Color (16 bpp) or True Color (24 bpp) and your scroll seems to be extremely slow, use this option. Your colors are limited to 256 colors, which allows your operating system easier ability to scroll your text.

3.4 Previous Display

If you have changed your display to 256 colors using the Try 256 Colors? under the Configure Menu and want to return to your original Hi-color or True Color, use this option.



Section 4.0 Font Menu

4.1 Type and Size (Fonts & Colors)

Use this option to change the **font type and size** of the current text document. When changing the font, the text editor will resize according to the font type and size you have selected. Some fonts are not True Type specific and may appear odd when using outline or other effects in LitePrompter.

4.2 Font Color

Color changes the **font color** to any color you may have in your system.

Remark: Not all colors are NTSC/PAL safe and may appear odd when scrolling. This applies to font and background colors.

4.3 Background Color

This feature allows a change of **background color** from default black. Click on the color grid speed button to change the **background color**.

4.4 Bold

Bold highlights your lettering for dramatic effect.

Remark: Not all fonts are true-type, and bold may appear differently when using non true-type fonts.

4.5 Underline

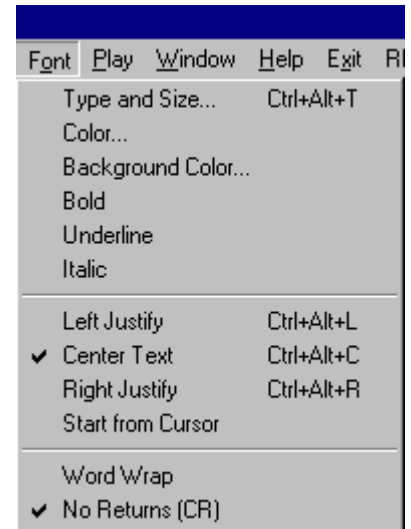
Underlines all of your text for visible word breaks.

4.6 Italic

Italic can be used for special meanings.

4.7 Left Justify

If you don't want your text centered you can **left justify** all text by clicking on this option. If **Screen Res** is set to **Full Screen**, **Left Justify** moves all text to the left edge of your screen, else text will be left justified using the current text position.



4.8 Center Text

Center Text, centers the text in the editor box, and the scroll screen.

4.9 Right Justify

If **Screen Res** is set to **Full Screen**, **Right Justify** moves all text to the right edge of your screen, else text will be right justified using the current text position.

4.10 Start from Cursor

This option allows your text to automatically begin scrolling from wherever you have placed your cursor in the edit screen. In addition, if you want your scrolling to start at the beginning of the text, remember to deactivate **Start from Cursor**.

4.11 Word Wrap

The **word wrap** option will toggle **word wrap** in the editor on or off.

Word wrap allows your typed text to wrap to the next line without making hard returns.

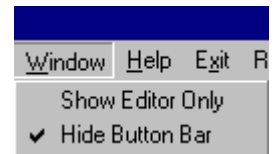
4.12 No Returns

No Returns will disable the [Enter] key in the editor.

Section 5.0 Window Menu

5.1 Show Editor Only

Opens the text edit panel so that you can **add** text, **move** text, **delete** text, etc. in a larger display window.

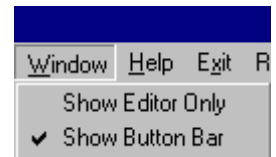


5.2 Hide Button Bar

Use this option to remove just the speed buttons located below the menu bar.

5.2 Show Button Bar

Use this option to return the speed buttons to the desktop after removing them with **Hide Button Bar**.



Section 6.0 Help Menu

6.1 Help

This option jumps you into the help menu for information on running LitePrompter. For the latest information on LitePrompter drop by <http://drs-digitrax.com>

6.2 About LitePrompter

LitePrompter was written because there wasn't any W95/NT4.0 software available to use as a teleprompter in our video productions. Using LitePrompter, we now produce documentaries and other talking head segments with ease.

LitePrompter is the W95/98/NT Teleprompter for video professionals. While there may be dedicated hardware teleprompters costing much more and providing much less, LitePrompter is the teleprompting solution that runs on today's Multimedia PC computer at an affordable price. The feature-rich prompting system provides all the functions of the older style Teleprompters with the latest innovations and enhancements that are required by today's computerized video professional.

6.3 Factory Defaults

Use **Factory Defaults** if you experience problems that are not easily remedied by changing fonts, resizing the screen, etc.

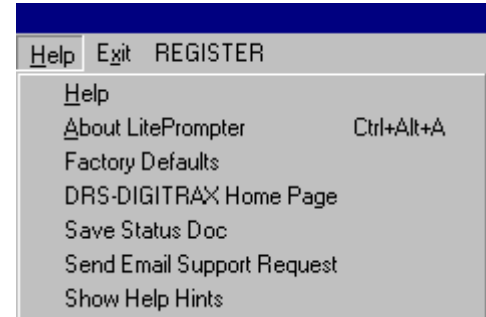
Factory Defaults will return your configurations to a known "perfect" configuration for scrolling. You can then change your fonts, size, colors, etc. to whatever configuration you choose.

6.4 DRS-DigiTrax Home Page

Use this option to toggle your browser program on. You can then check the support page for help and updates if you have questions concerning the operations of LitePrompter.

6.5 Save Status Doc

If you find that installation of new software or peripherals has caused a slow down of LitePrompter that was not apparent prior to the change, click on this option to save a file called "liteprom.txt". Email us at support@drs-digitrax.com detailing your problem and attach this file. Our support technicians are then better able to ascertain the problem and suggest a remedy.



6.6 Send Email Support Request

A quick way to contact us concerning problems is by clicking on this option within LitePrompter. This option automatically opens your defaulted email software with our address.

6.7 Show Help Hints

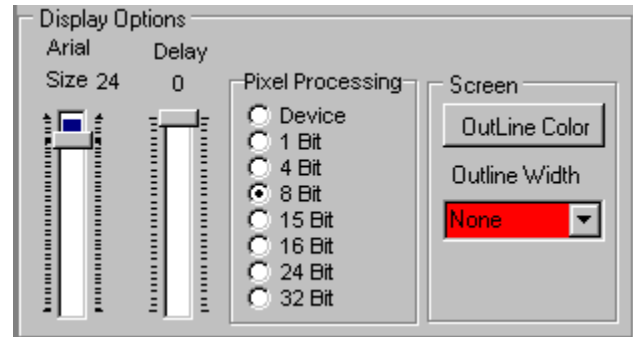
You can toggle on or off help hints that are seen whenever your mouse rests on a button.

Section 7.0 Display Options

7.1 Font Size & Delay Options

There are two play screens in LitePrompter. The main or **Video Mode** screen, and the **non Video Mode**. The **non Video Mode** is used to set the **font size** and **speed delay** while your text is scrolling. After setting the **font size** and **speed delay**, use the **Video Mode** screen to scroll your text.

See also: 8.3 Non Video Mode



7.2 Pixel Processing

The **Pixel Processing** panel is used to change the quality of the output in regards to the color depth of your current display. This option may need adjustment so LitePrompter can talk to your native video driver.

The various modes work differently on different machines. A few of the modes may not work at all on your computer and you may get a blank screen when scrolling. The optimum adjustment is usually 8 or 15 bit processing for 24 bit color displays.

7.3 Screen

A. Outline Color

Choose a contrasting color to outline your text with this option. This is additional color to background and font color.

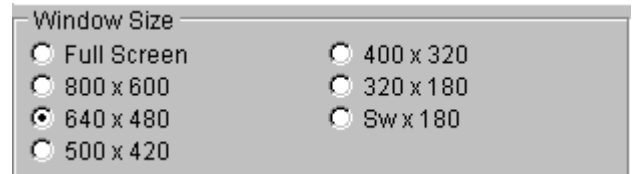
B. Outline Width

To change the width of the outline for your text, this option allows 1-4 width size.

Note: The larger the width size, the more memory intensive. It is recommended you use the smallest outline width to prevent jerky scroll.

7.4 Window Size

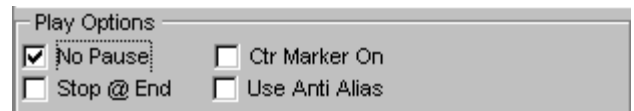
The Window Size sets the physical size of the scrolling display window within your screen. It can be used to decrease the size of the scrolling display for slower machines. Also setting pixel processing to 1 or 4 bit may help speed things up.



7.5 Play Options

A. No Pause

Scrolling text usually begins with 1 second blank display. If you choose to have your text scroll immediately without a slight pause, check this box.



B. Stop at End

When a scrolling text comes to the end of its text file, the program automatically jumps back out to the main program menu.

C. Center Marker On

This option allows you to have a pointer on the center of the left side of the screen, which allows your "talent" to concentrate on a specific line to read.

D. Use Antialias

Applies an **antialias** effect (softening) to scrolling text. When scrolling, the **antialias** effect is fixed.

Remark: Antialias requires that your current display be set to 16 bit Hi-Color or greater to work.

Section 8.0 Other Information

8.1 Quick Start

Using the **File Open** option, open a text file in LitePrompter. Then click the blue **Play** arrow. Adjust the **delay** slider if it scrolled too fast or slow, then **Play** it again.

8.2 Speed Bar

Allows instant option capability by clicking on a button instead of using a pull down menu.

Options are **clear**

text, **open** text, **save** text, **save c(onfiguration)**, **play**, **Font**, **font color**, **background color**, **center text**, **video mode**.



See Also: Hide Button Bar

8.3 Non-Video Mode

The **Non-Video Mode** uses the play screen with a small menu on the right.

Both the **Center Marker On** and **Non-Video Mode** can be used at the same time.

8.4 Reverse Scroll

Reverse scroll is used to back up to an earlier position in your text document while scrolling. To use this option, press the right mouse button while scrolling, then release the button when you have backed up to your desired starting point. To resume scrolling, press the space bar or the left mouse button.

Note: There may be partial scrolled lines on the screen. This is caused when, on reverse, you stop midway in a sentence. The operating system was not able to read lines above the midpoint of your stop. Try stopping under or above a line to prevent this cutoff.

8.5 Bi-Directional Editing

Some countries write and read from right to left. Your version of LitePrompter may have this option.

8.6 Hardware Requirements

Most High-Speed computers will have no problem with LitePrompter. However, certain Win95 486 machines do poorly, particularly older laptops. If you too are experiencing slow scrolling movement, consider upgrading to Win NT4.0. If the scrolling action is just too slow to be usable, consider a 586 100mhz CPU or better. Certain machines will work much faster with 256 color 640x480 displays instead of 16 million colors.

Your video card plays an important role in the quality of the video output. LitePrompter makes all of its requests and capabilities based on and from your operating system. It has no special drivers or hardware requirements.

8.7 Support

Please visit **www.drs-digitrax.com** for the latest help information

Section 9.0 How To's

9.1 How to begin scrolling text

The easiest way to create your text file is with your word processing program of choice, or the editor in LitePrompter. Because of the limitations of W95/W98, your file size is limited to 32kb (appx. 45 minutes of scroll). W2000 and NT allow for appx. 2 gigabytes of file size. Only True Type Fonts are supported by LitePrompter.

After entering your text, save it as a TEXT ONLY file (the word processing program automatically adds the .txt extension).

Now open LitePrompter. Under the "File Menu" LitePrompter, click "open" and change to the directory you saved your file. LitePrompter is set up to read "text type files only". If you did not properly save your file in text format, LitePrompter will not be able to "see" the file. When you find your file, highlight and then click "open". This will bring your file into the Editor Window. Click the "Play" button for your text to scroll in LitePrompter.

You can change the font type and size in the Editor Window by clicking on the "A Font" speed button or clicking on the Font Menu. The entire file is changed to the font you choose.

You can center, left justify, right justify, bold, underline or italicize using the options under the Font Menu. These effects will be used on the entire text file.

You'll note that when formatting (bold, etc) it is either all text or none. This is a limitation of text file formatting.

9.2 How to use Anti Alias (font smoothing)

The use of Anti Aliasing was designed for simple titling for videos. Your operating system may have "Font Smoothing" as a display setting option under your Control Panel. If not, use this option for Anti Aliased fonts.

To feed the scrolling text to tape, you'll need a gen lock, or additional device so the VCR can "read" and then record the signal.

Set your display to True Color (24 bpp) in the Control Panel of your operating system.

Click the Anti Alias box on the LitePrompter Main Menu.

Start the scroll. If your text does not scroll in Anti Alias mode, your video card is not adequate to support Anti Alias.

9.3 How to use pixel processing

Some older PC's are not able to process scrolling easily. Using Device, 1 bit, or 4 bit simplifies the text and allows the system to scroll the text.

Note: You may lose your formatted color in these modes.
One or more of these pixel setting modes may not work with your current video card.

Section 10.0 Problems

10.1 Jerky or watery movement

1. Too many multitasking processes are running in your computer.
2. Your computer is too slow. Try installing on a faster computer.
3. Use NT4.0 or higher if possible.
4. Use the Screen Resolution option to shrink the scroll area.
5. Use a smaller output screen resolution by changing your display to the 640 x 480 - 256 color mode.
6. As a last resort, try setting the Pixel Processing to 1 BIT. This is the easiest way for your operating system to handle graphics. It also limits the colors. You may have to switch to a white color font after setting the Pixel Processing to 1 BIT.

10.2 Blank screen after clicking play

The current delay is too long.

If using a laptop, try changing the [Screen Res] or [Output Window Size] to a size smaller than the maximum possible screen size. Example: If your laptop's display is 640x480, try 600x440. Some laptops use a virtual display mode, which can be larger than your logical display size. This causes problems sometimes.

Also, sometimes the **Pixel Processing** setting can make a difference if set to a mode that your video card can not support. Try changing **Pixel Processing** to 8 bit, this usually works well.

Another possibility is that you are using the overlay option of your video card. LitePrompter only uses Windows 95/98/NT standard video output via your VGA output port. Are you using a scan converter or genlock to capture the video and feeding it into your video card's capture port?

10.3 Adjust speed/size - too slow

When I adjust the speed or font size while scrolling (using non Video Mode), it takes a long time to register the changes I made. How come?

The program checks for changes such as keystrokes, page down, page up, arrow keys, escape, space bar, and mouse clicks only at the end of a scrolled line. The larger the font size, the slower response time for speed changes.

Find the font size you desire, place your text in loop mode, and play it. Once it begins scrolling, hold down the page up key to speed it up, and press the page down key to slow the scroll down. Once the scroll is at your approximate speed, use the arrow keys to adjust to precise speed. You also have the option of using the **Delay** slider on the non Video Mode screen to change speeds. Toggle off **Vmode** to go to non Video Mode.

The program also allows you to save this particular configuration so you don't have to adjust for future use. At file pull down menu, click on **Save Configuration As**.

10.4 Scrolling motion is too slow

Use the sample configurations that are included in the LitePrompter package. Use the Load Configuration option to see which ones shipped with your particular version. The samples contain various settings that should improve scrolling output.

See Also: Hardware Requirements

10.5 Checking your Video Mode

Click on the [About] option from the main menu [Help] option. The about box has a "BPP" setting displayed. The "BPP" is your current [Bits Per Pixel] setting.

The [BPP] caption should be 8, not 16, 24 or 32, if you are having slow speed problems. On the other hand, if your display is too fast and you can not slow it down, change your display to 24 or 32 bit. This will force the CPU and graphics card to work a little harder and take longer. Or, use the [Sync/w Retrace] option if using W95/98.

If the [BPP] caption is not 8, use the [Start] [Settings] [Control Panel] [Display Settings] option in windows to change to the 256 color mode.

If this does not improve the scrolling speed you may have to consider the fact that your PC or video card is not adequate for scrolling.

10.6 Still starts in demo mode

After registering my software, it still starts in demo mode. How come?

This is caused when you move the program files from the original installation folder to another folder. To remedy this problem, reinstall the program to the folder you will be running your program from - OR - copy the program files back to the original installation folder.

See Also: Other Information

10.7 More Speed

Use the sample configurations that are included in the LitePrompter package. Use the [Load Configuration] option to see which ones shipped with your particular version. The samples contain various settings that should improve scrolling output. Change your windows display settings screen resolution to 640x480 using 256 colors. This will increase the speed of scrolling.

Change the **Window Size** to a smaller size or use a **Screen Res** lower than your actual max screen size. Select and use the **Pixel Processing** option to 8 or lower. This may provide a slight improvement.

Use simple fonts like Arial. Use white fonts on a black background.

Buy a video card with at least 2-4 megs of ram.

In LitePrompter you can change the scrolling speed, while scrolling text, by using the Page Up/Down and Arrow keys.

10.8 Background Colors Are Wrong

I chose a color for the background, and when I initially began playing the text the color was there. However, when the text actually began scrolling, the color was different. How come?

First, you need to look under control panel on the desktop; then under display; and finally under settings. Look to see what color mode you are running in. If it's only 256 colors, you need to make sure LitePrompter's main screen pixel processing box is checked at 8 bit. Now, go into background colors and pick a color that is solid and not broken up. If, however, your monitor and video board allows for a large color capacity (high color or true color) make sure the pixel processing box is checked for 24 bit. This allows for a maximum color choice.

10.9 Font Colors are wrong

I chose a background color that worked, but, when I chose a font color and then clicked play, no text was seen. What happened?

First, you need to look under control panel on the desktop and then under display and finally under settings. Look to see what color mode you are running in. If it's only 256 colors, you need to make sure LitePrompter's main screen pixel processing box is checked at 8 bit.

Then go into font colors and pick a color that is solid and not broken up. If, however, your monitor and video board allows for a large color capacity (high color or true color) make sure the pixel processing box is checked for 24 bit. This allows for a maximum color choice.

DISCLAIMER OF WARRANTY

BY USING THIS PACKAGE, YOU ARE CONSENTING TO BE BOUND BY THIS AGREEMENT. IF YOU DO NOT AGREE TO ALL OF THE TERMS OF THIS AGREEMENT, PROMPTLY CONTACT DRS-DIGITRAX TO ARRANGE AN APPROPRIATE REMEDY.

Free of charge demo software is provided on an "AS IS" basis, without warranty of any kind, including without limitation the warranties of merchantability, fitness for a particular purpose and non-infringement. The entire risk as to the quality and performance of the Software is borne by you. Should the software prove defective, you and not DRS-DIGITRAX assume the entire cost of any service and repair. In addition, you must determine that the Software sufficiently meets your requirements. This disclaimer of warranty constitutes an essential part of the agreement. SOME JURISDICTIONS DO NOT ALLOW EXCLUSIONS OF AN IMPLIED WARRANTY, SO THIS DISCLAIMER MAY NOT APPLY TO YOU AND YOU MAY HAVE OTHER LEGAL RIGHTS THAT VARY BY JURISDICTION.

TERMS APPLICABLE WHEN REGISTRATION LICENSE FEES PAID GRANT.

Subject to payment of applicable license fees, DRS-DIGITRAX grants to you a non-exclusive license to use the Software and accompanying documentation ("Documentation") in the manner described below under "Scope of Grant."

LIMITED WARRANTY

DRS-DIGITRAX warrants that for a period of sixty (60) days from the date of acquisition, the Software, if operated as directed, will substantially achieve the functionality described in the Documentation. DRS-DIGITRAX does not warrant, however, that your use of the Software will be uninterrupted or that the operation of the Software will be error-free. DRS-DIGITRAX also warrants that the media containing the Software, if provided by DRS-DIGITRAX, is free from defects in material and workmanship and will so remain for sixty (60) days from the date you acquired the Software. DRS-DIGITRAX's sole liability for any breach of this warranty shall be, in DRS-DIGITRAX's sole discretion: To replace your defective media; or to advise you how to achieve substantially the same functionality with the software as described in the documentation through a procedure different from that set forth in the Documentation. Repaired, corrected, or replaced software and documentation shall be covered by this limited warranty for the period remaining under the warranty that covered the original Software, or if longer, for thirty (30) days after the date (a) of shipment to you of the repaired or replaced Software, or (b) DRS-DIGITRAX advised you how to operate the Software so as to achieve the functionality described in the Documentation. Only if you inform DRS-DIGITRAX of your problem with the Software during the applicable warranty period, and provide evidence of the date you purchased a license to the Software will DRS-DIGITRAX be obligated to honor this warranty. DRS-DIGITRAX will use reasonable commercial efforts to repair, replace, advise or, for individual consumers, refund pursuant to the foregoing warranty within 30 days of being so notified

THIS IS A LIMITED WARRANTY AND IT IS THE ONLY WARRANTY MADE BY DRS-DIGITRAX. DRS-DIGITRAX MAKES NO OTHER EXPRESS WARRANTY AND NO WARRANTY OF NON-INFRINGEMENT OF THIRD PARTIES' RIGHTS. THE DURATION OF IMPLIED WARRANTIES, INCLUDING WITHOUT LIMITATION, WARRANTIES OF MERCHANTABILITY AND OF FITNESS FOR A PARTICULAR PURPOSE, IS LIMITED TO THE ABOVE LIMITED WARRANTY PERIOD; SOME JURISDICTIONS DO NOT ALLOW LIMITATIONS ON HOW LONG AN IMPLIED WARRANTY LASTS, SO LIMITATIONS MAY NOT APPLY TO YOU. NO DRS-DIGITRAX DEALER, AGENT, OR EMPLOYEE IS AUTHORIZED TO MAKE ANY MODIFICATIONS, EXTENSIONS, OR ADDITIONS TO THIS WARRANTY.

If you make any modifications to the Software during the warranty period; if the media is subjected to accident, abuse, or improper use; or if you violate the terms of this Agreement, then this warranty shall immediately be terminated. This warranty shall not apply if the Software is used on or in conjunction with hardware or software other than the unmodified version of hardware and software with which the software was designed to be used as described in the Documentation.

THIS WARRANTY GIVES YOU SPECIFIC LEGAL RIGHTS, AND YOU MAY HAVE OTHER LEGAL RIGHTS THAT VARY BY JURISDICTION.

SCOPE OF GRANT OF PURCHASED SOFTWARE**You may:**

- Use the Software on any single computer;
- Use the Software on a network, provided that each person accessing the Software through the network must have a copy licensed and registered to that person;
- Use the Software on a second computer so long as only one copy is used at a time;
- Copy the Software for archival purposes, provided any copy must contain all of the original Software's proprietary notices; or
- If you have purchased licenses for a 10 Pack or a 50 Pack, make up to 10 or 50 copies, respectively, of the Software (but not the Documentation), provided any copy must contain all of the original Software's proprietary notices.

You may not:

- Permit other individuals to use the Software except under the terms listed above; Permit concurrent use of the Software;
- Modify, translate, reverse engineer, decompile, disassemble (except to the extent applicable laws specifically prohibit such restriction), or create derivative works based on the Software;
- Copy the Software other than as specified above;
- Rent, lease, grant a security interest in, or otherwise transfer rights to the Software; or remove any proprietary notices or labels on the Software.

TITLE

Title, ownership rights, and intellectual property rights in the Software shall remain in DRS-DIGITRAX and/or its suppliers. The Software is protected by the copyright laws and treaties.

TERMINATION

The license will terminate automatically if you fail to comply with the limitations described herein. On termination, you must destroy all copies of the Software and Documentation.

EXPORT CONTROLS

None of the Software or underlying information or technology may be downloaded or otherwise exported or re-exported (i) into (or to a national or resident of) Cuba, Iraq, Libya, Yugoslavia, North Korea, Iran, Syria or any other country to which the U.S. has embargoed goods; or (ii) to anyone on the U.S. Treasury Department's list of Specially Designated Nationals or the U.S. Commerce Department's Table of Denial Orders. By downloading or using the Software, you are agreeing to the foregoing and you are representing and warranting that you are not located in, under the control of, or a national or resident of any such country or on any such list.

LIMITATION OF LIABILITY. UNDER NO CIRCUMSTANCES AND UNDER NO LEGAL THEORY, TORT, CONTRACT, OR OTHERWISE, SHALL DRS-DIGITRAX OR ITS SUPPLIERS OR RESELLERS BE LIABLE TO YOU OR ANY OTHER PERSON FOR ANY INDIRECT, SPECIAL, INCIDENTAL, OR CONSEQUENTIAL DAMAGES OF ANY CHARACTER INCLUDING, WITHOUT LIMITATION, DAMAGES FOR LOSS OF GOODWILL, WORK STOPPAGE, COMPUTER FAILURE OR MALFUNCTION, OR ANY AND ALL OTHER COMMERCIAL DAMAGES OR LOSSES. IN NO EVENT WILL DRS-DIGITRAX BE LIABLE FOR ANY DAMAGES IN EXCESS OF THE AMOUNT DRS-DIGITRAX RECEIVED FROM YOU FOR A LICENSE TO THE SOFTWARE, EVEN IF DRS-DIGITRAX SHALL HAVE BEEN INFORMED OF THE POSSIBILITY OF SUCH DAMAGES, OR FOR ANY CLAIM BY ANY OTHER PARTY. THIS LIMITATION OF LIABILITY SHALL NOT APPLY TO LIABILITY FOR DEATH OR PERSONAL INJURY TO THE EXTENT APPLICABLE LAW PROHIBITS SUCH LIMITATION. FURTHERMORE, SOME JURISDICTIONS DO NOT ALLOW THE EXCLUSION OR LIMITATION OF INCIDENTAL OR CONSEQUENTIAL DAMAGES, SO THIS LIMITATION AND EXCLUSION MAY NOT APPLY TO YOU.

HIGH RISK ACTIVITIES

The Software is not fault-tolerant and is not designed, manufactured or intended for use or resale as on-line control equipment in hazardous environments requiring fail-safe performance, such as in the operation of nuclear facilities, aircraft navigation or communication systems, air traffic control, direct life support machines, or weapons systems, in which the failure of the Software could lead directly to death, personal injury, or severe physical or environmental damage ("High Risk Activities"). DRS-DIGITRAX and its suppliers specifically disclaim any express or implied warranty of fitness for High Risk Activities.

MISCELLANEOUS

If the copy of the Software you received was accompanied by a printed or other form of "hard-copy" End User License Agreement whose terms vary from this Agreement, then the hard-copy End User License Agreement governs your use of the Software. This Agreement represents the complete agreement concerning this license and may be amended only by writing executed by both parties. **THE ACCEPTANCE OF ANY PURCHASE ORDER PLACED BY YOU IS EXPRESSLY MADE CONDITIONAL ON YOUR ASSENT TO THE TERMS SET FORTH HEREIN, AND NOT THOSE IN YOUR PURCHASE ORDER.** If any provision of this Agreement is held to be unenforceable, such provision shall be reformed only to the extent necessary to make it enforceable. This Agreement shall be governed by California law (except for conflict of law provisions). The application the United Nations Convention of Contracts for the International Sale of Goods is expressly excluded.

U.S. GOVERNMENT RESTRICTED RIGHTS

Use, duplication or disclosure by the Government is subject to restrictions set forth in subparagraphs (a) through (d) of the Commercial Computer-Restricted Rights clause at FAR 52.227-19 when applicable, or in subparagraph (c)(1)(ii) of the Rights in Technical Data and Computer Software clause at DFARS 252.227-7013, or at 252.211-7015, or to DRS-DIGITRAX standard commercial license, as applicable, and in similar clauses in the NASA FAR Supplement. Contractor/manufacturer is DRS-DIGITRAX SERVICES 113 Utah Ave, Woodland, CA 95695.

Above all, please report any bug or program malfunction to DRS-DIGITRAX at support@drs-digitrax.com.

Enjoy,

DRS-DIGITRAX TECHNICAL AND SUPPORT STAFF

DRS-DIGITRAX SERVICES

Phone: (530) 666-4025 Fax: 530-669-6738
www.drs-digitrax.com support@drs-digitrax.com
Copyright © 1999 DRS-DIGITRAX SERVICES. All rights reserved
0041401-3M